



BRENTFORD COMMUNITY STADIUM

More than just a football club

NEWSLETTER 1 | JANUARY 2013

Dear Neighbour,

Welcome to the first community newsletter for the new proposals to relocate Brentford Football Club.

Brentford Football Club is planning to move from its existing stadium at Griffin Park to a new purpose built community stadium at a site in Lionel Road South.

The site, which is currently occupied by industrial tenants, is located between Kew Bridge station and the elevated M4 motorway close to Chiswick roundabout.

After many years of effort, the project took a step forward on 28th June 2012 when the Club bought a 7.6 acre site in Lionel Road South from Barratt Homes who had originally acquired the site in January 2008 for a development in partnership with the Club.

The Club is planning to build a stadium on the land with a capacity of up to 20,000.

As a local resident living in the area, we would like to invite you to our first exhibition about our proposals.

Further details of the exhibition location and times are overleaf. We hope that you are able to attend, but if this is not possible please feel free to contact a member of the development team if you have any questions.

Yours sincerely,

Brian Burgess

Director, Lionel Road Developments Limited



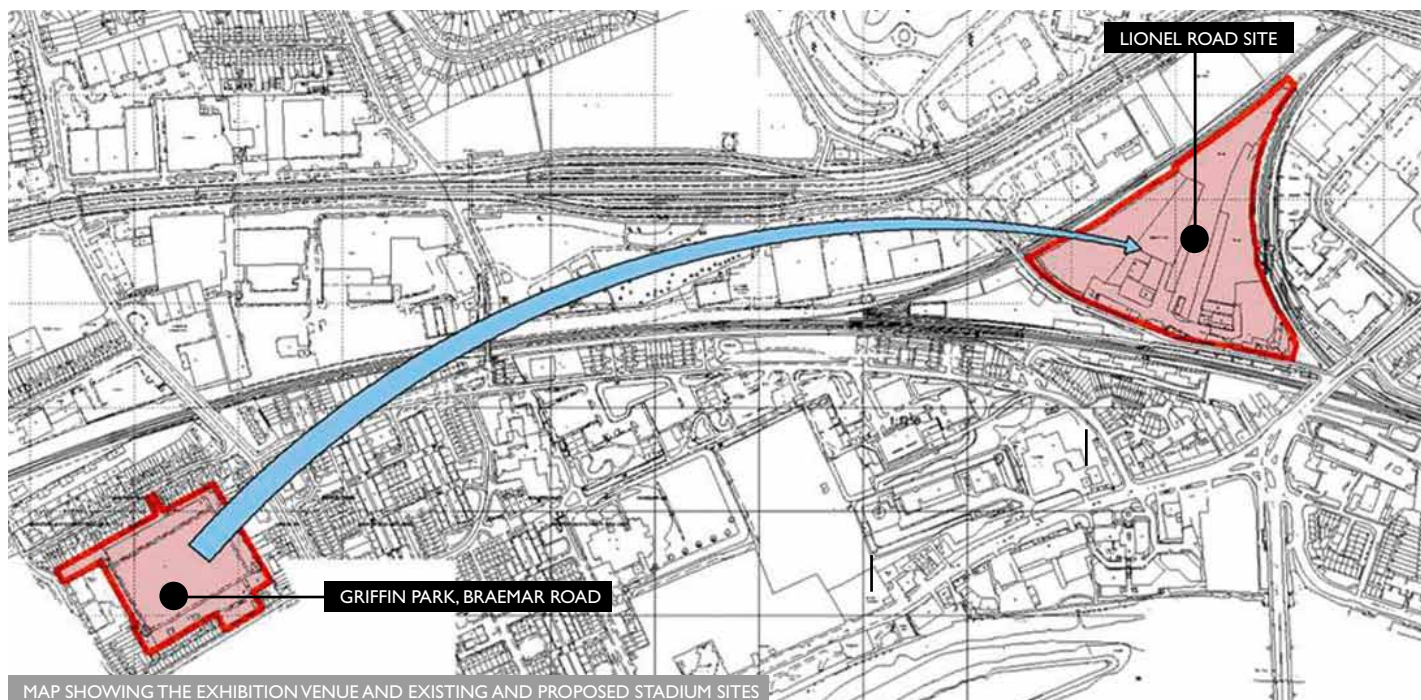
THE EXISTING SITE



AERIAL VIEW OF THE SITE

DID YOU KNOW?

The new stadium will also provide a new home for Brentford FC Community Sports Trust, a charity which works with over 27,000 young people and also runs the Griffin Park Learning Zone and the Brentford Boating Arch at nearby Kew Bridge.



OUR EXHIBITION

Your views matter a great deal to us. Our exhibition is taking place over three days in January 2013:

Venue: **Griffin Park, Braemar Road Entrance**

Dates: **Thursday 17th, 5:30pm - 8:30pm**
Friday 18th, 1pm - 5pm
Saturday 19th, 9:30am - 12noon

OUR VISION

The project vision is to:

- Provide a modern, good quality 20,000 capacity stadium for first class professional football and rugby with the potential to generate income to secure the long term sustainability of Brentford Football Club;
- Provide a social focal point with a buzz of activity;
- Enable the Brentford FC Community Sports Trust to provide a range of activities that will:
 - Attract all age groups from all sections of the local communities;
 - Promote sport, health, education, employment and training, social enterprise and social inclusion.
- Construct a sustainable, low carbon scheme;
- Assist in the regeneration of the area and build close links with local businesses and residents.



CONTACT US

Even if you cannot make the exhibition we would still like to hear from you.

You can write to us at our FREEPOST address:

Brentford Community Stadium
 FREEPOST RLSX-KHXT-BGSR
 C/o Four Communications
 The Communications Building
 48 Leicester Square
 London, WC2H 7FG

T: Nicholas Vose on 020 3023 9081

E: nicholas.vose@fourcommunications.com

www.brentfordcommunitystadium.com