



BRENTFORD COMMUNITY STADIUM

More than just a football club



Lionel Road Liaison Group Presentation

22nd April 2013

DAS Extracts

Scheme Overview

Opportunities and Constraints | Key Axis



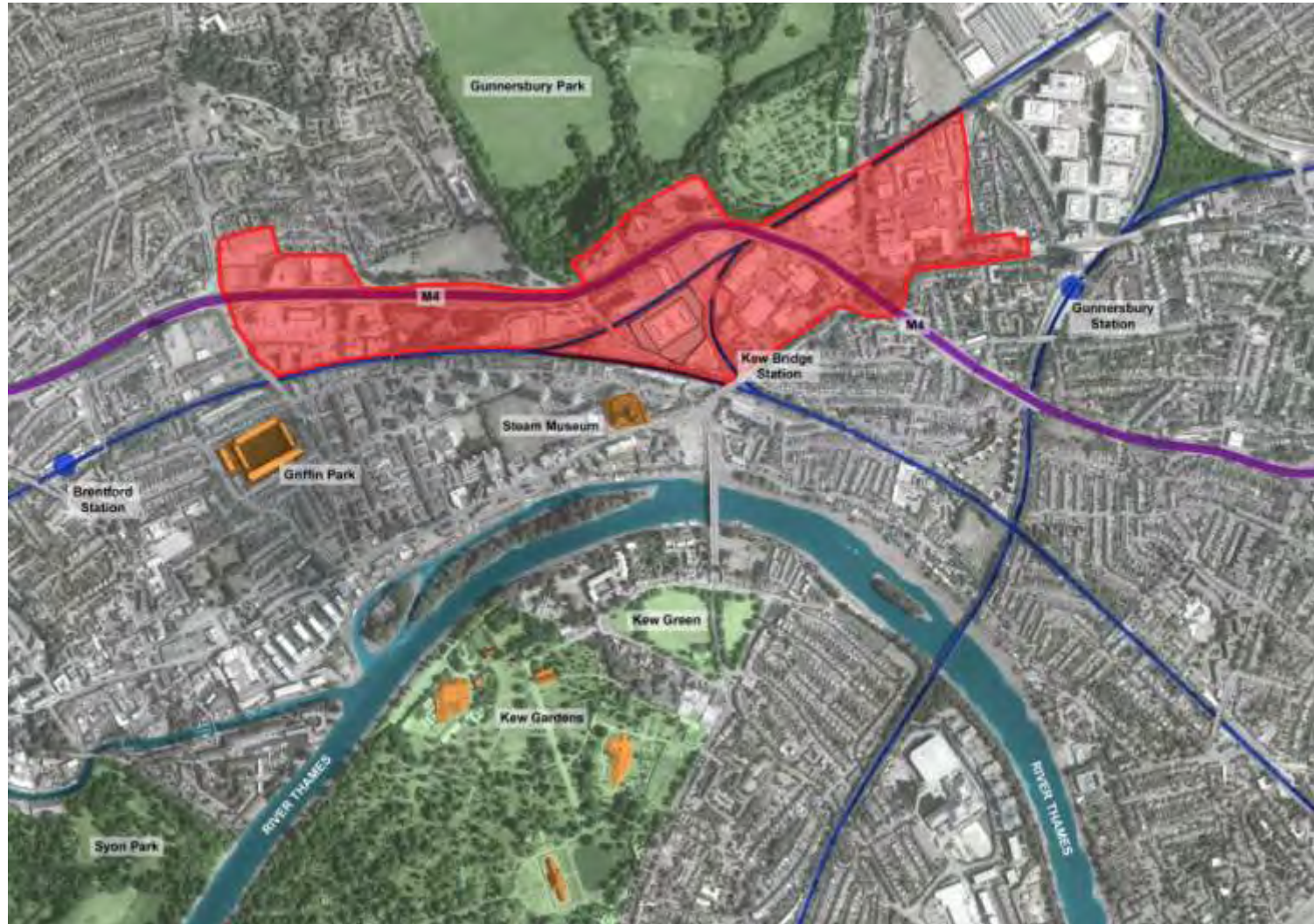
**BRENTFORD
COMMUNITY STADIUM**
More than just a football club



Opportunities and Constraints | Immediate Context



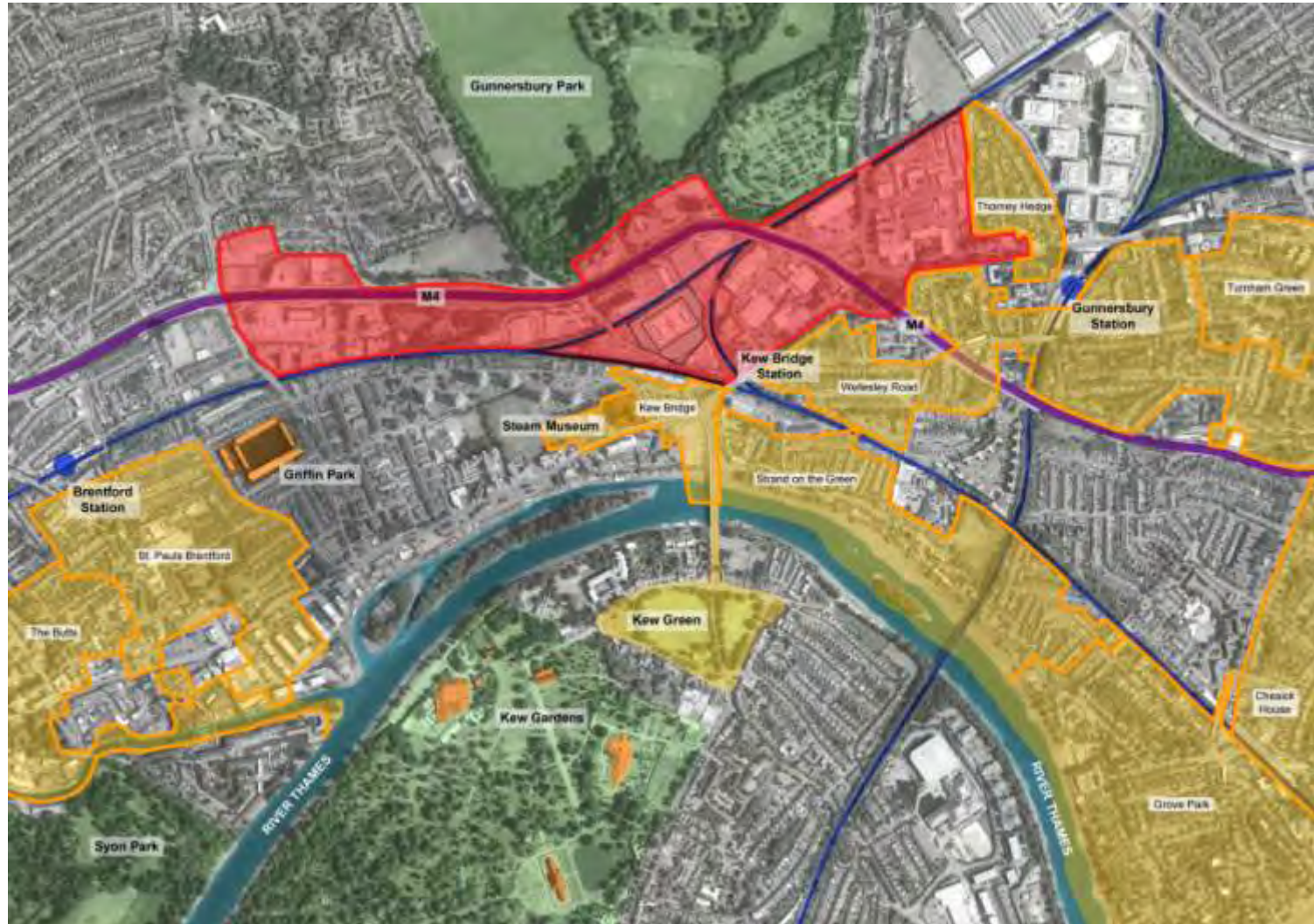
**BRENTFORD
COMMUNITY STADIUM**
More than just a football club



Opportunities and Constraints | Wider Context



**BRENTFORD
COMMUNITY STADIUM**
More than just a football club



The Existing Site



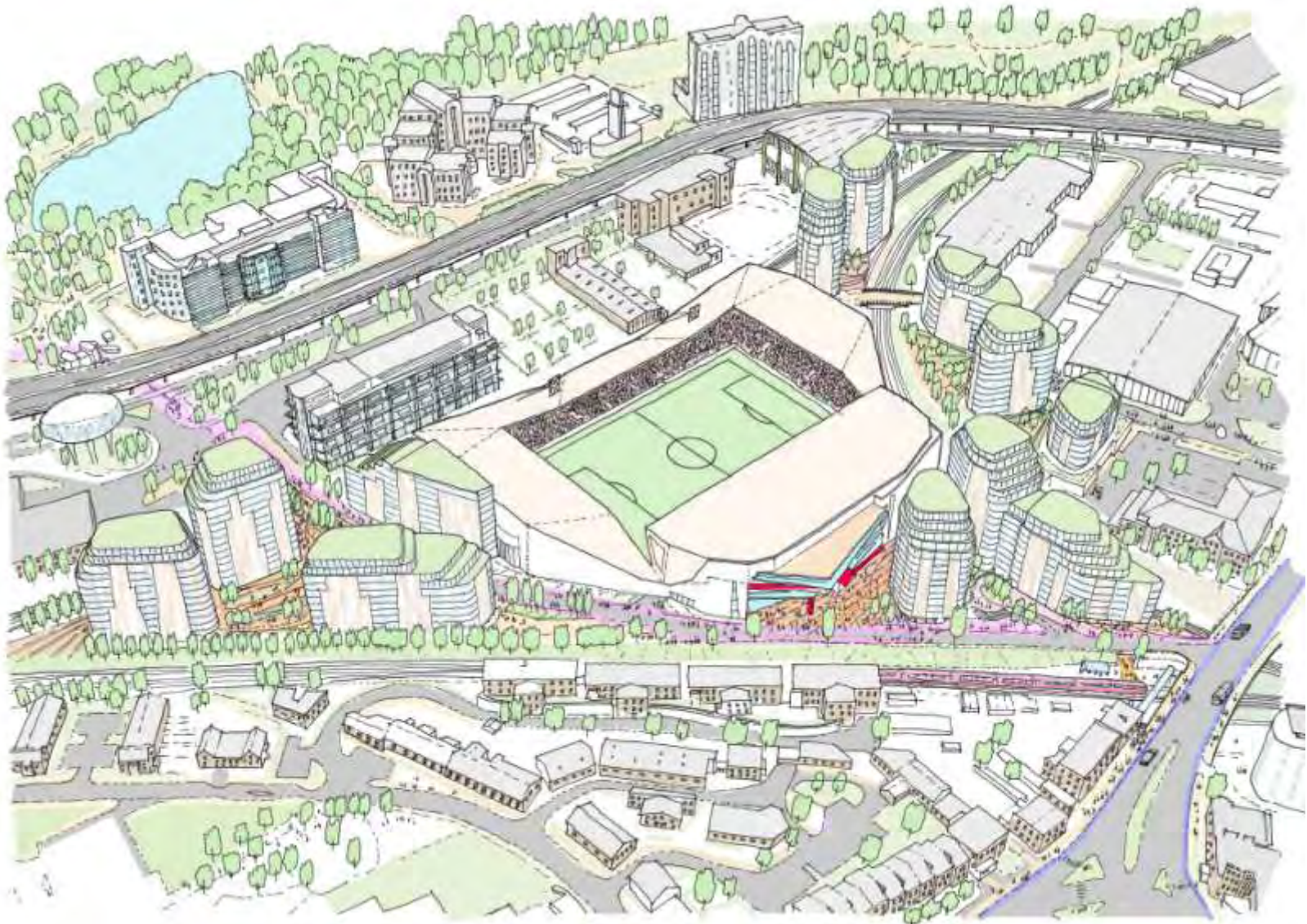
**BRENTFORD
COMMUNITY STADIUM**
More than just a football club



Aerial Image



**BRENTFORD
COMMUNITY STADIUM**
More than just a football club



Spatial Structure



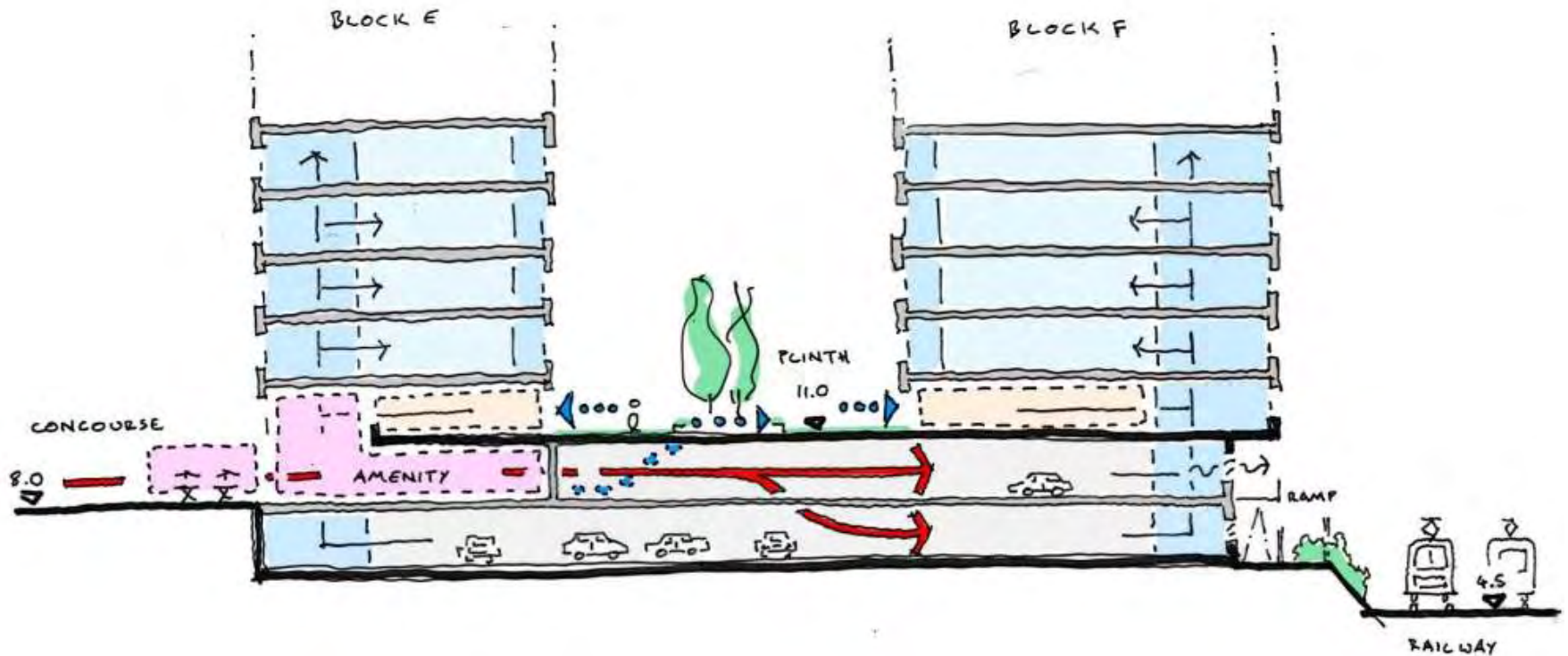
**BRENTFORD
COMMUNITY STADIUM**
More than just a football club



Capacity | Parking Podia (South)



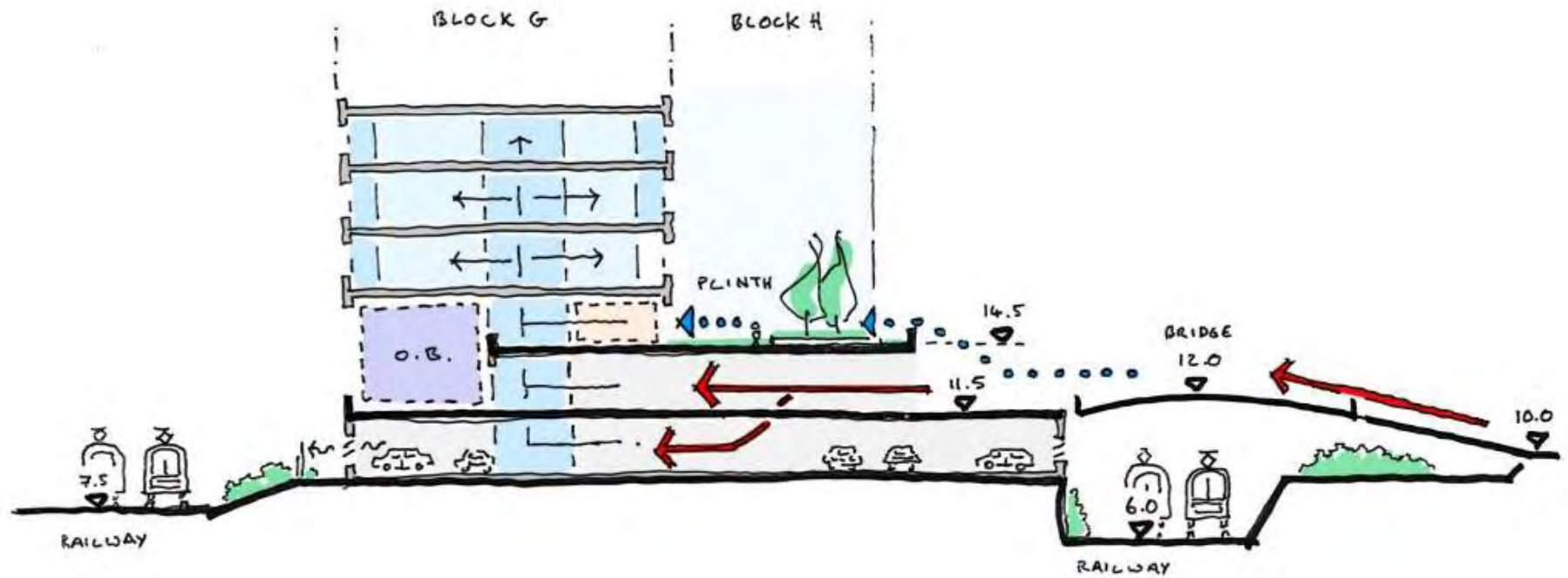
**BRENTFORD
COMMUNITY STADIUM**
More than just a football club



Capacity | Parking Podia (East)



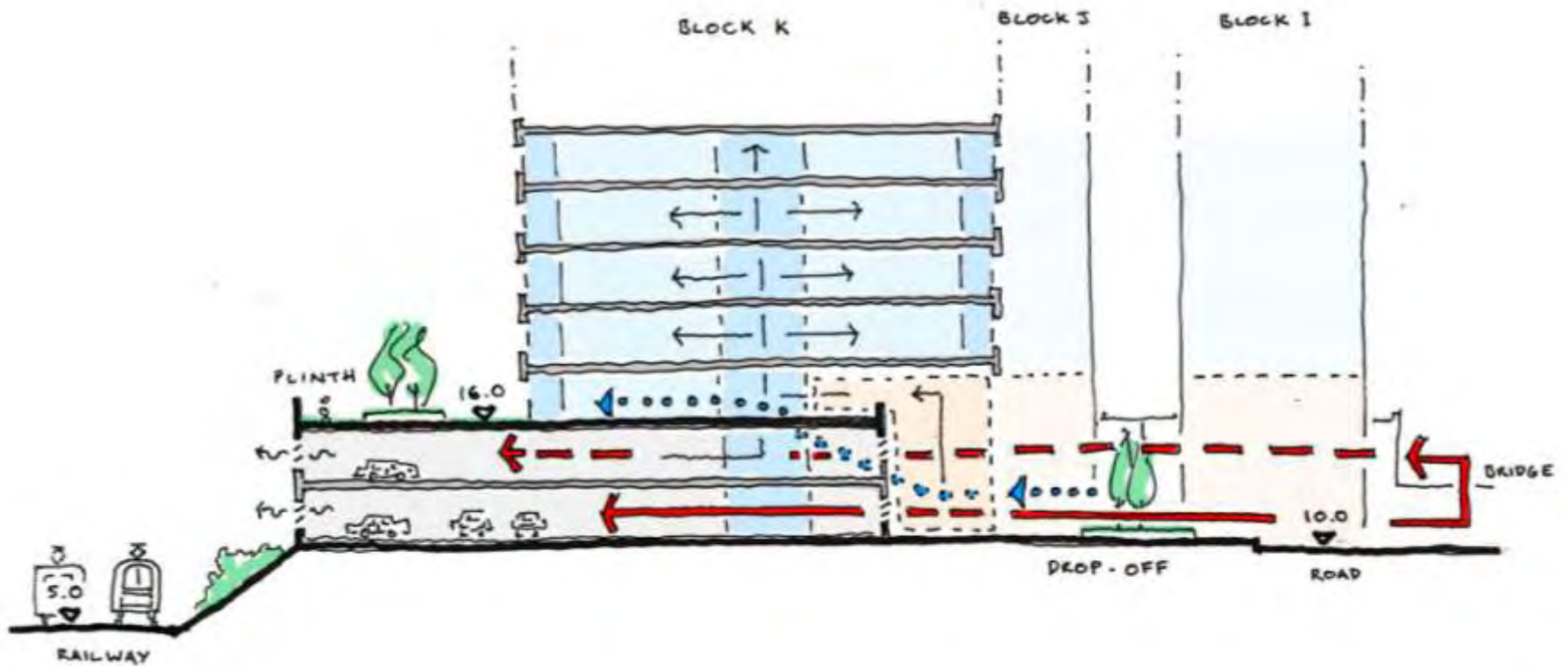
**BRENTFORD
COMMUNITY STADIUM**
More than just a football club



Capacity | Parking Podia (Capital Court)



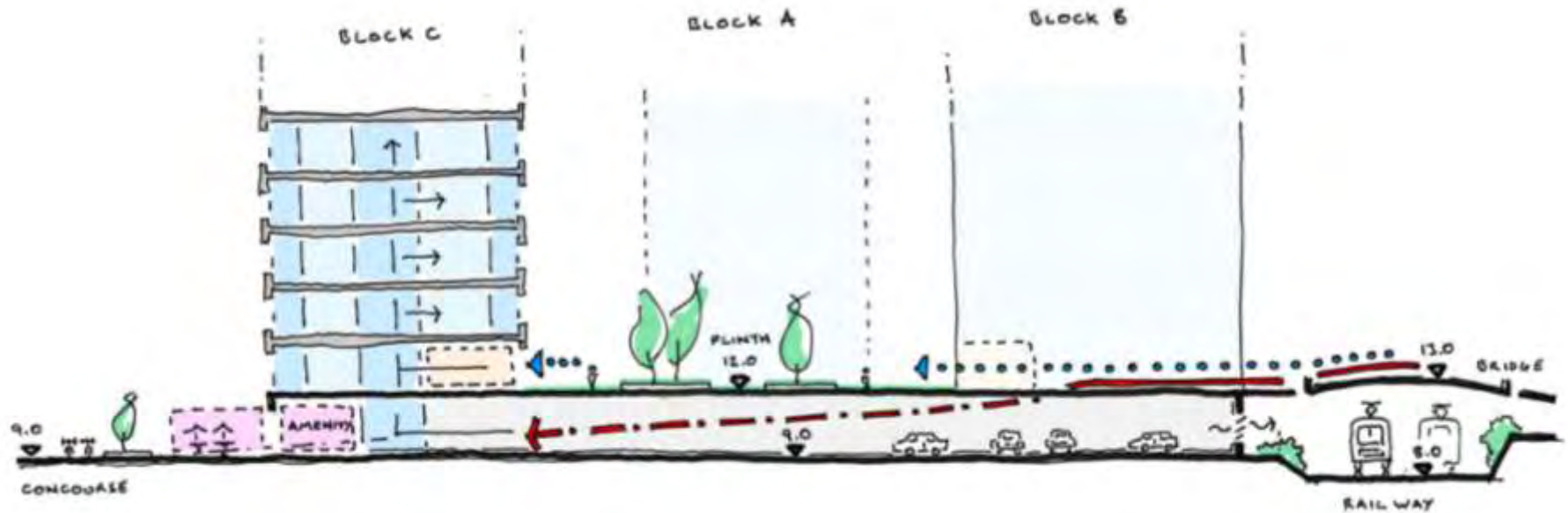
**BRENTFORD
COMMUNITY STADIUM**
More than just a football club



Capacity | Parking Podia (West)



**BRENTFORD
COMMUNITY STADIUM**
More than just a football club



The Masterplan in Context



**BRENTFORD
COMMUNITY STADIUM**
More than just a football club



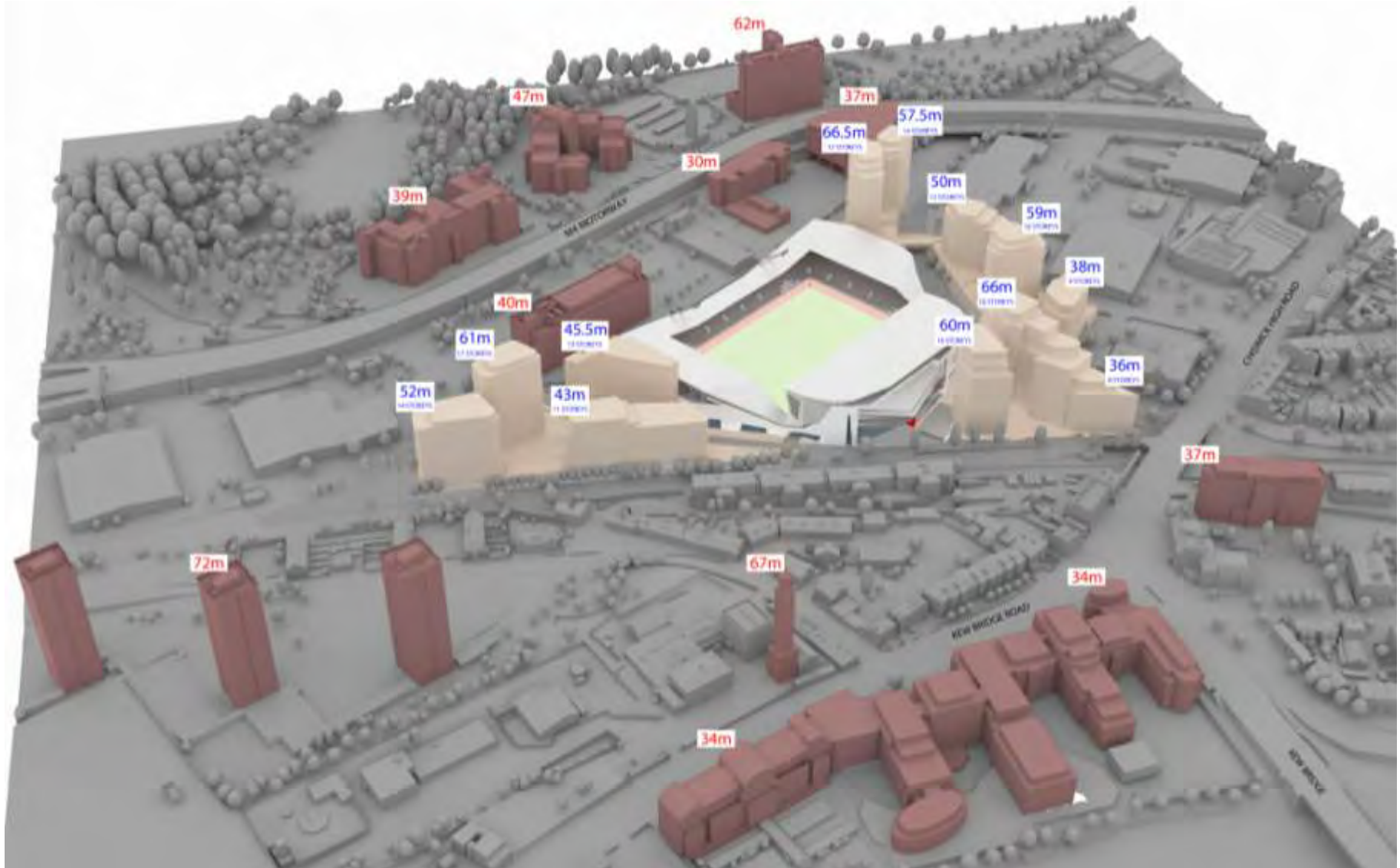
The Masterplan

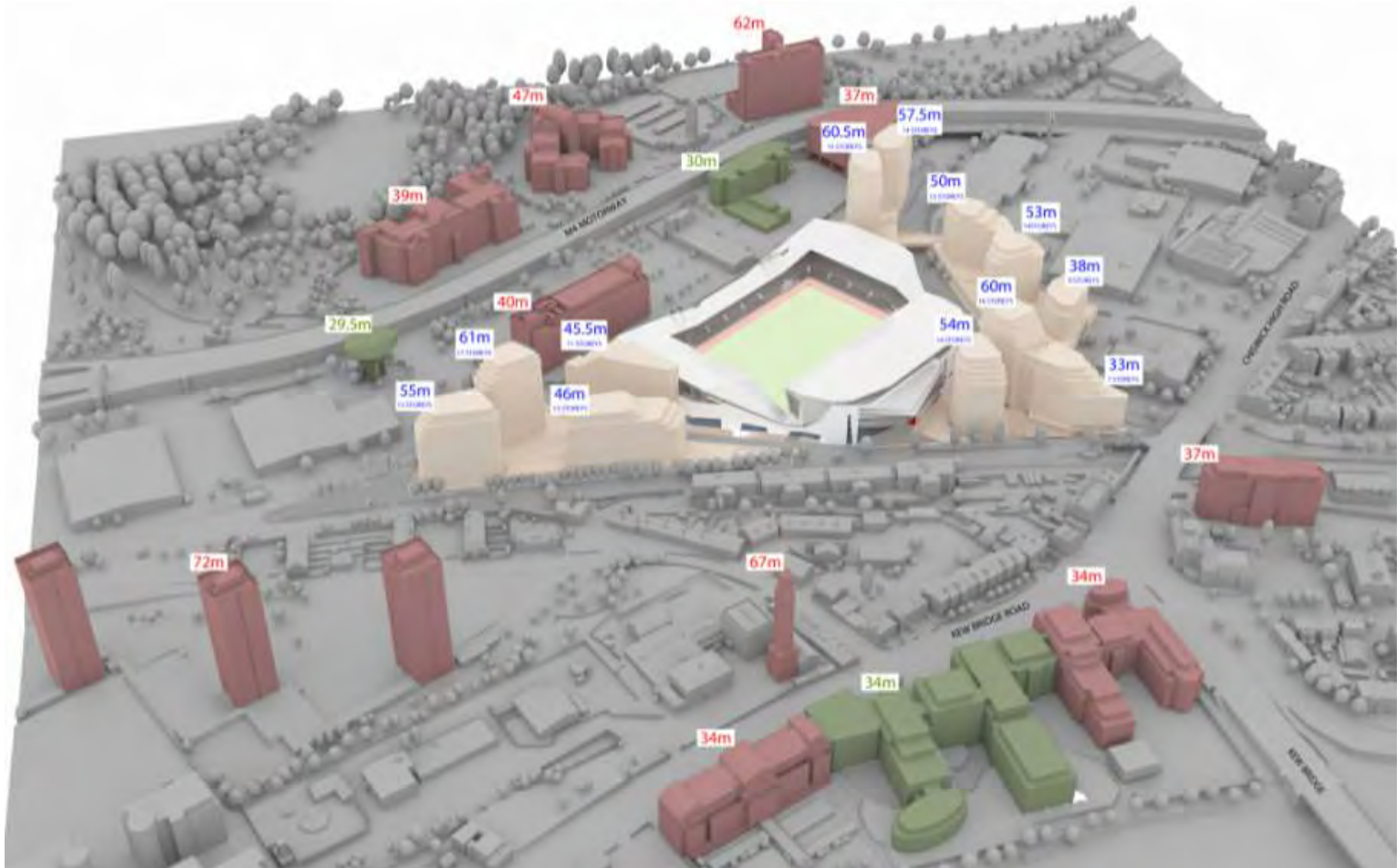


**BRENTFORD
COMMUNITY STADIUM**
More than just a football club



Massing / Change





**Views Presented in
March, AVR 2 + Public
Views AVR**



















**BRENTFORD
COMMUNITY STADIUM**
More than just a football club





**BRENTFORD
COMMUNITY STADIUM**
More than just a football club







Further Views





**BRENTFORD
COMMUNITY STADIUM**
More than just a football club





















**BRENTFORD
COMMUNITY STADIUM**
More than just a football club













**BRENTFORD
COMMUNITY STADIUM**
More than just a football club





**BRENTFORD
COMMUNITY STADIUM**
More than just a football club

































**BRENTFORD
COMMUNITY STADIUM**
More than just a football club



























Views Taken After March Consultation

















**BRENTFORD
COMMUNITY STADIUM**
More than just a football club





**BRENTFORD
COMMUNITY STADIUM**
More than just a football club





**BRENTFORD
COMMUNITY STADIUM**
More than just a football club



Design Code Extracts



Plinths / Ground Plane



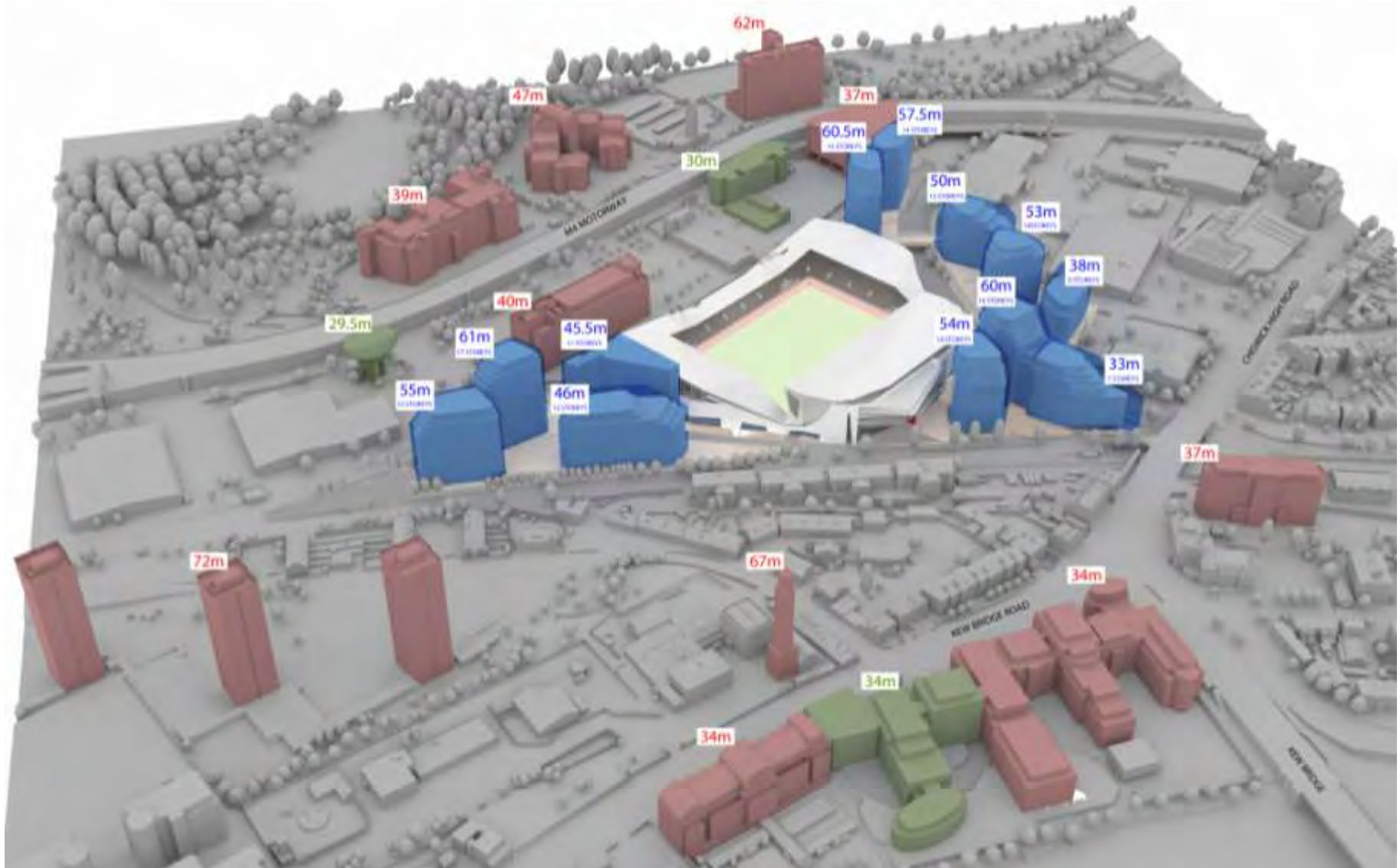
**BRENTFORD
COMMUNITY STADIUM**
More than just a football club



Volumetric Parameters



**BRENTFORD
COMMUNITY STADIUM**
More than just a football club



Ground Level Uses



**BRENTFORD
COMMUNITY STADIUM**
More than just a football club



Pedestrian Routes / Facilities



**BRENTFORD
COMMUNITY STADIUM**
More than just a football club







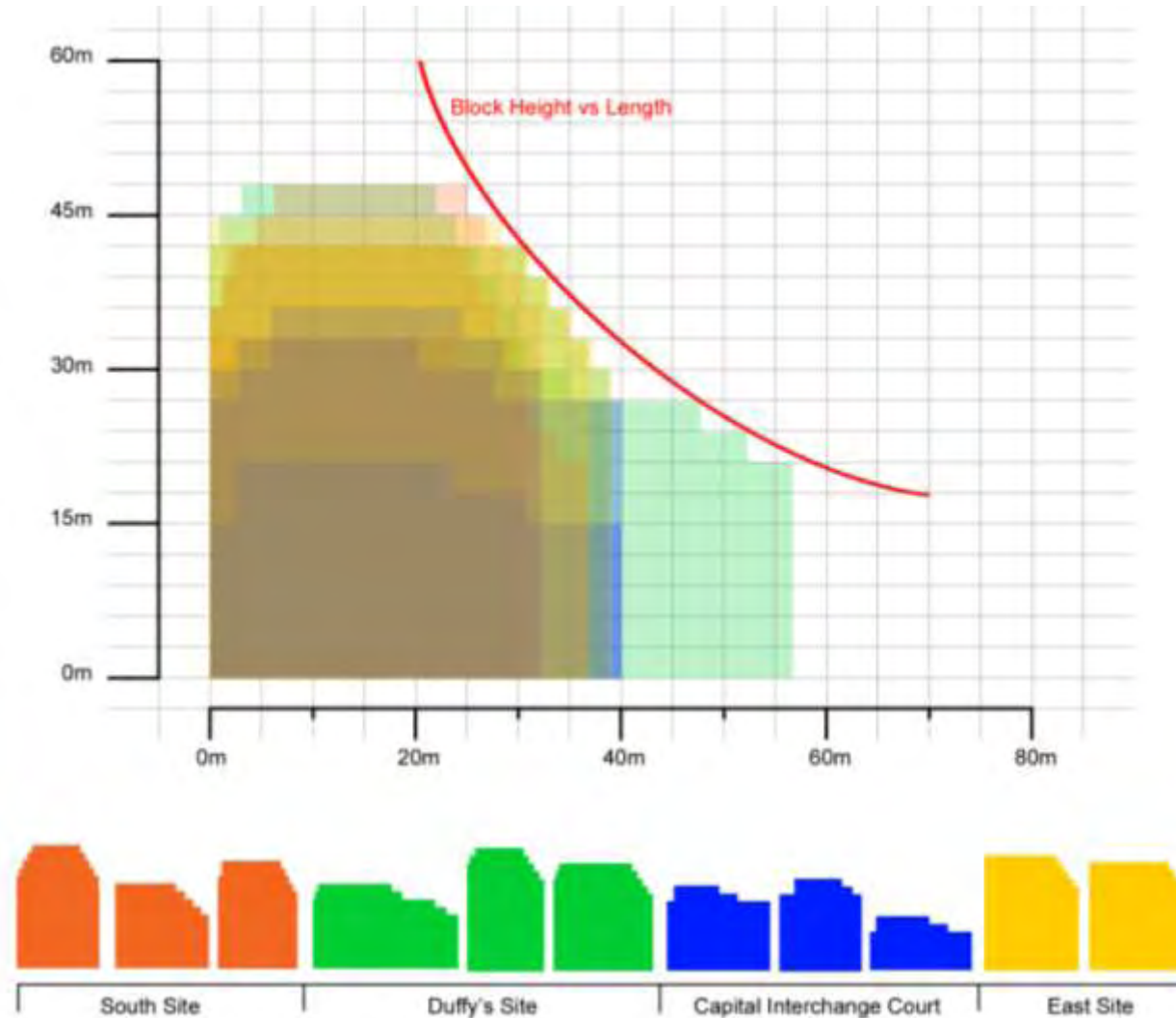


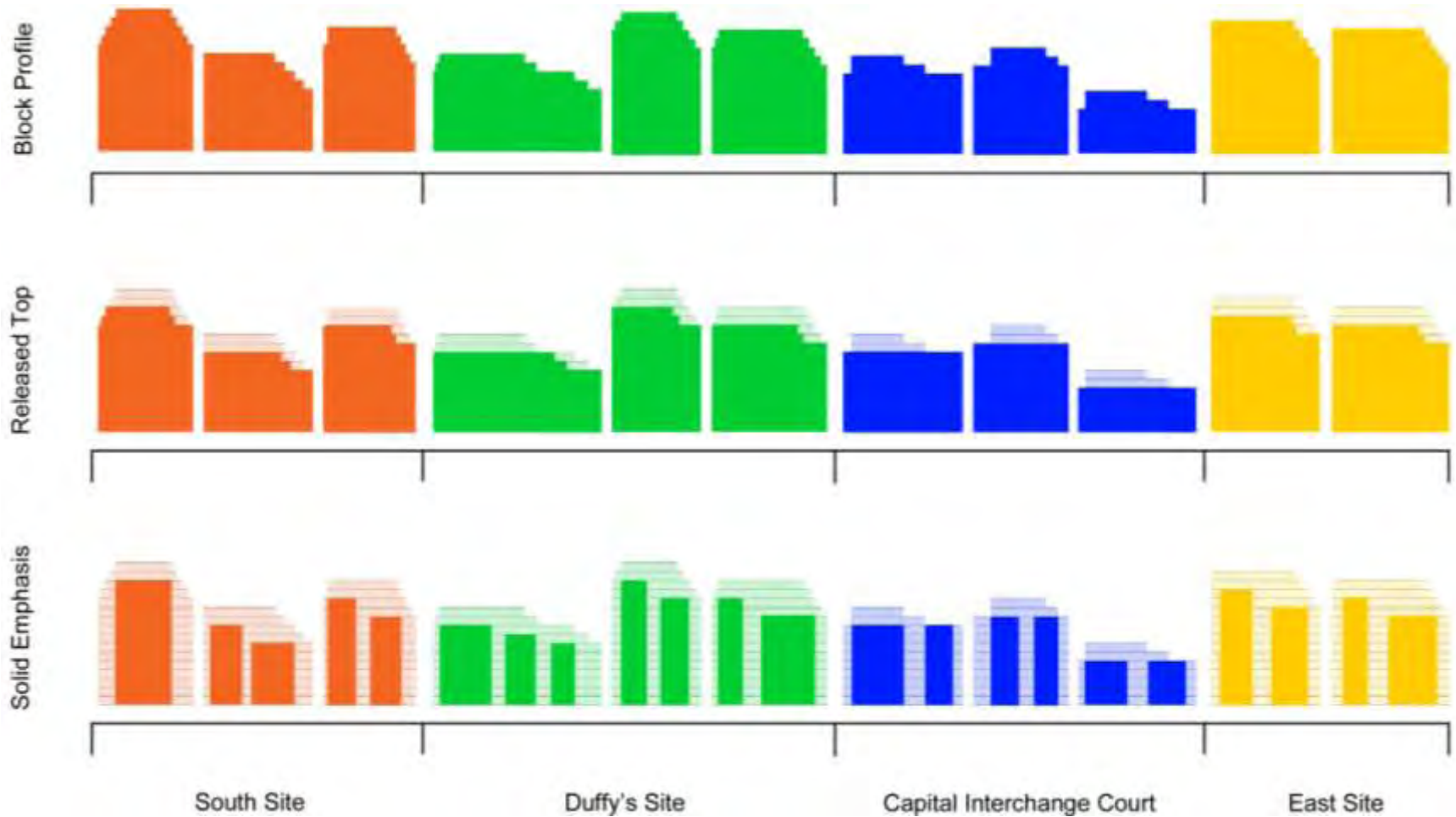
Cycle Routes

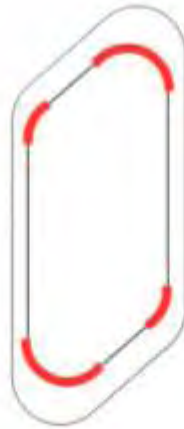
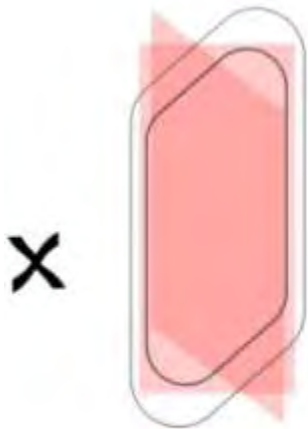
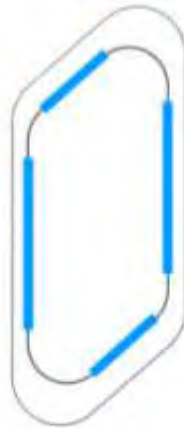
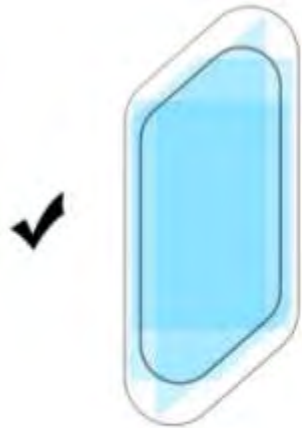


**BRENTFORD
COMMUNITY STADIUM**
More than just a football club









FLOOR PLATE
POSITION

WALL PANELS

BALCONIES

CORNER OPTIONS

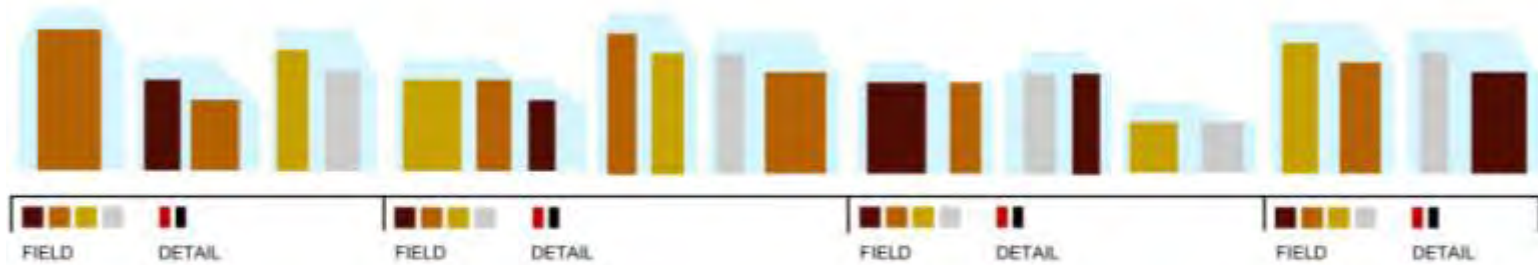


South Site

Duffy's Site

Capital Interchange Court

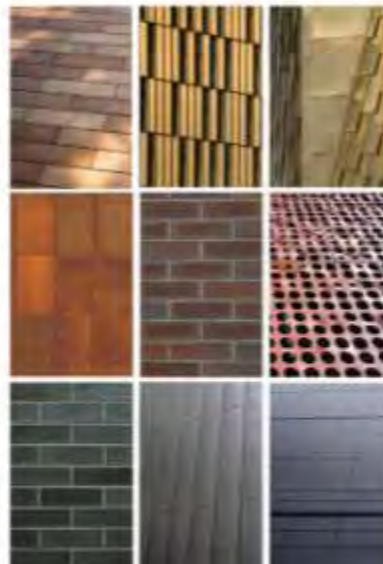
East Site



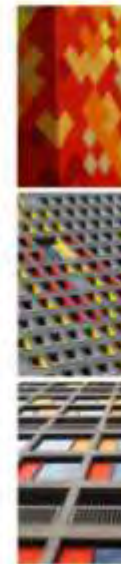
FIELD PALETTE



DETAIL PALETTE

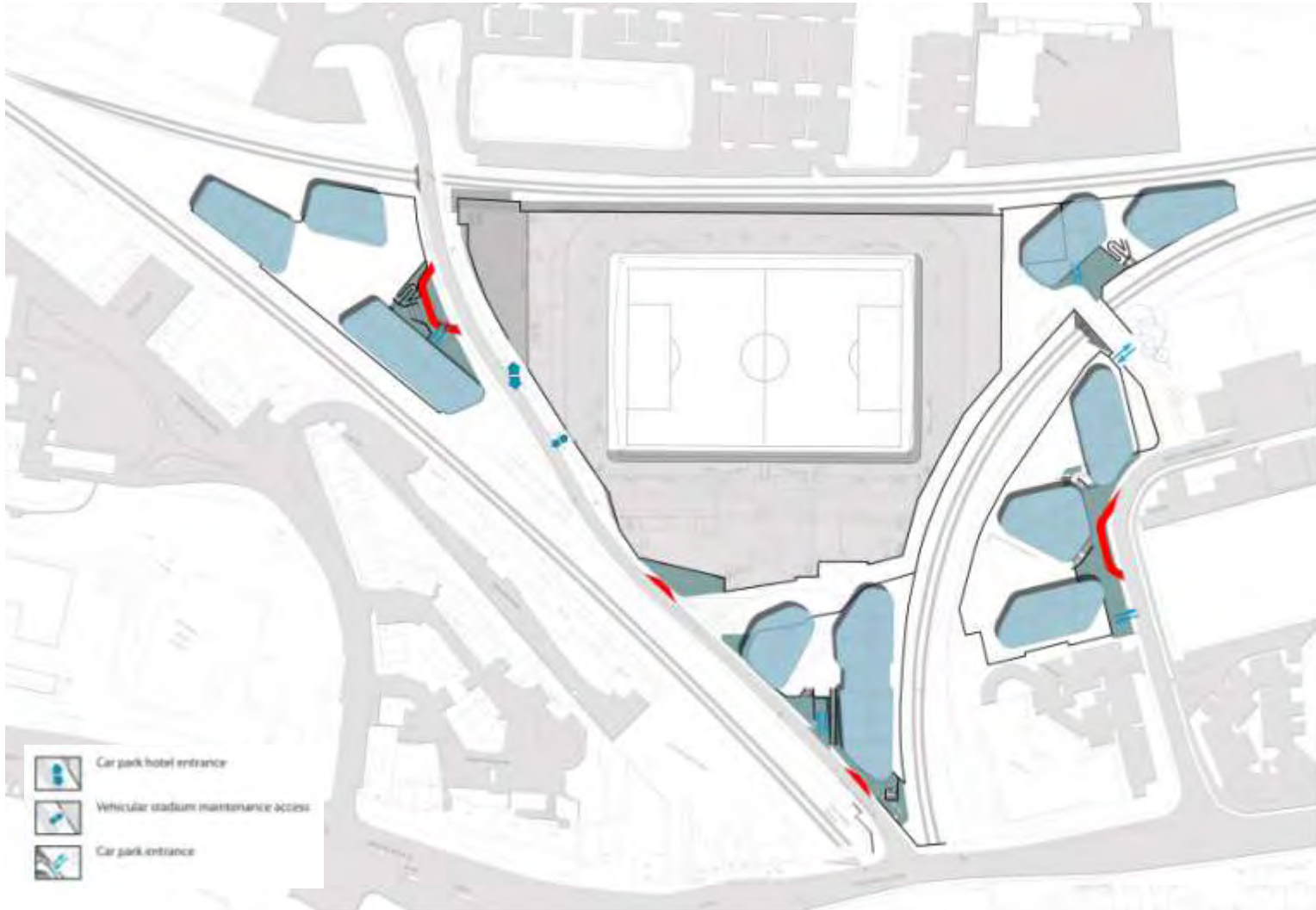


FIELD PALETTE



DETAIL PALETTE



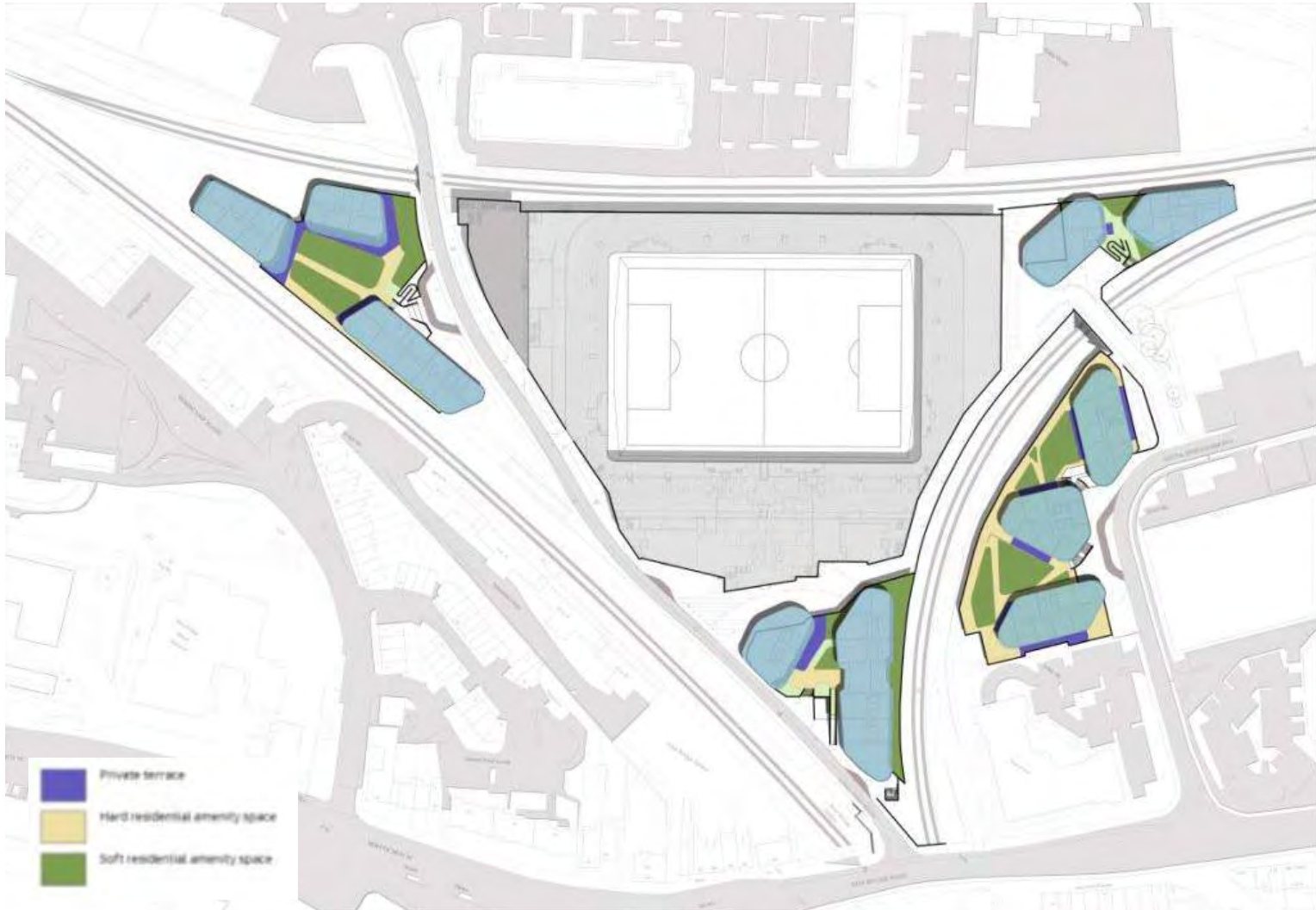


Landscape | Entrances & Drop-Off 2



**BRENTFORD
COMMUNITY STADIUM**
More than just a football club

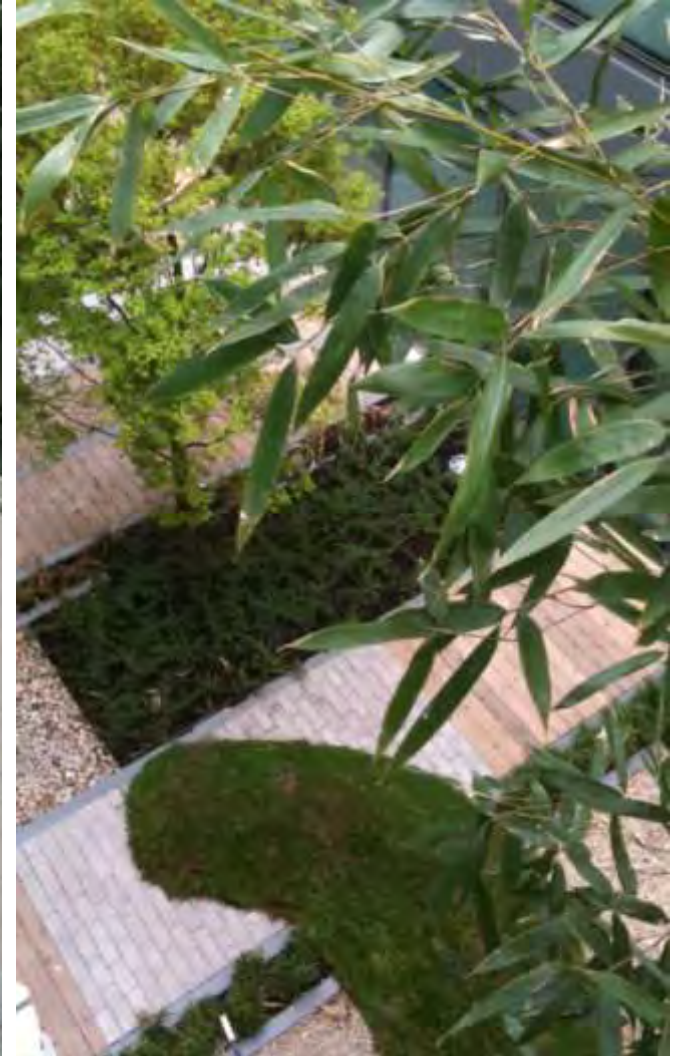




Landscape | Residential Podium Area 2



**BRENTFORD
COMMUNITY STADIUM**
More than just a football club







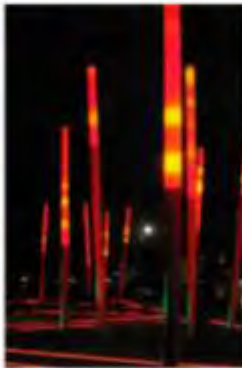
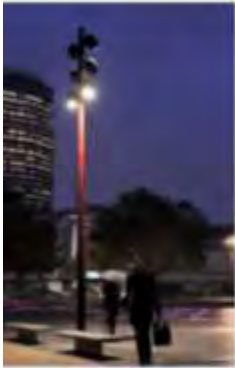
Concourse



Entrance



Subway





Landscape | Tree Strategy 2



**BRENTFORD
COMMUNITY STADIUM**
More than just a football club

Podium trees on slab (18-20cmg)

1. *Acer platanoides* 'Globosum'
2. *Betula utilis* 'jacquemontii'
3. *Prunus acolade*



Park trees - ornamental (30-35cmg)

4. *Fagus sylvatica*
5. *Liquidamber styraciflua*
6. *Pinus sylvestris*



Street trees (30-35cmg)

7. *Platanus x acerifolia*



Specimen tree (40-45cmg)

8. *Amelanchier lamarckii*
9. *Robinia pseudoacacia*





Landscape | Planting Locations / Type 2



**BRENTFORD
COMMUNITY STADIUM**
More than just a football club

Typical Herbaceous planting - within residential courtyards



Typical Native buffer planting - to boundaries



Transport & Access



- **Introduction**

Joe Ellis, Senior Technical Director WSP

Local experience includes Fulham FC, Chelsea FC, & Imperial Wharf

- **Non Match Day**

- Transport Strategy
- Residents concerns
- Stakeholder engagement

- **Match Day**

- Stadium Management Plan
- Residents concerns
- Stakeholder engagement



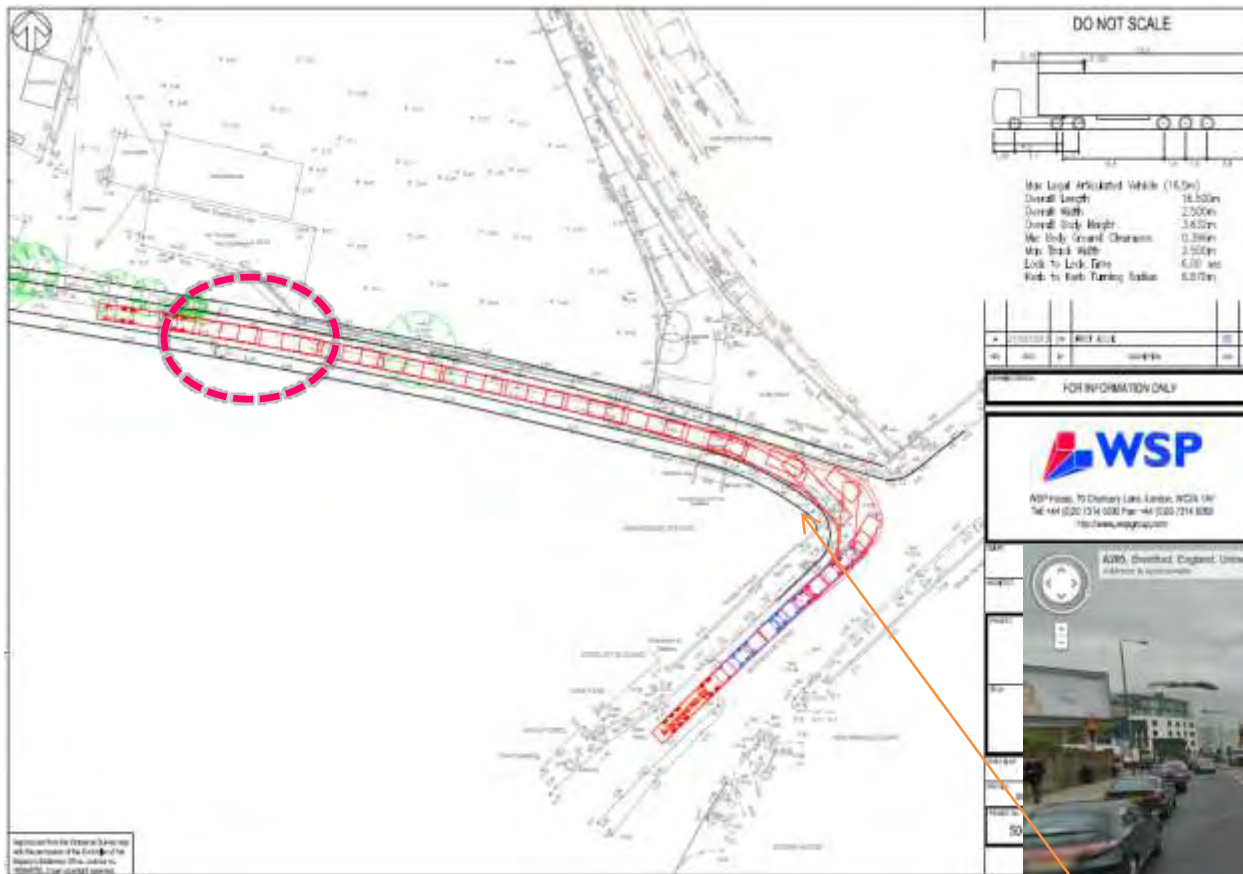
- **Non Match Day**
 - Strategy – underpinned by a comprehensive Transport Assessment which will be subject to extensive review by the transport authorities
 - Public transport
 - Kew Bridge station – direct access
 - Gunnersbury – station capacity assessment
 - Bus reliability - potential for signal re-timings
 - Traffic
 - Lionel Road improvements
 - Removal of larger vehicle that currently used the site
 - New bridge from Capital Interchange Way
 - Parking
 - Policy driven but mindful of car use
 - Potential for a CPZ as part of the Travel Plan



Scheme Overview | Kew Bridge Road



**BRENTFORD
COMMUNITY STADIUM**
More than just a football club



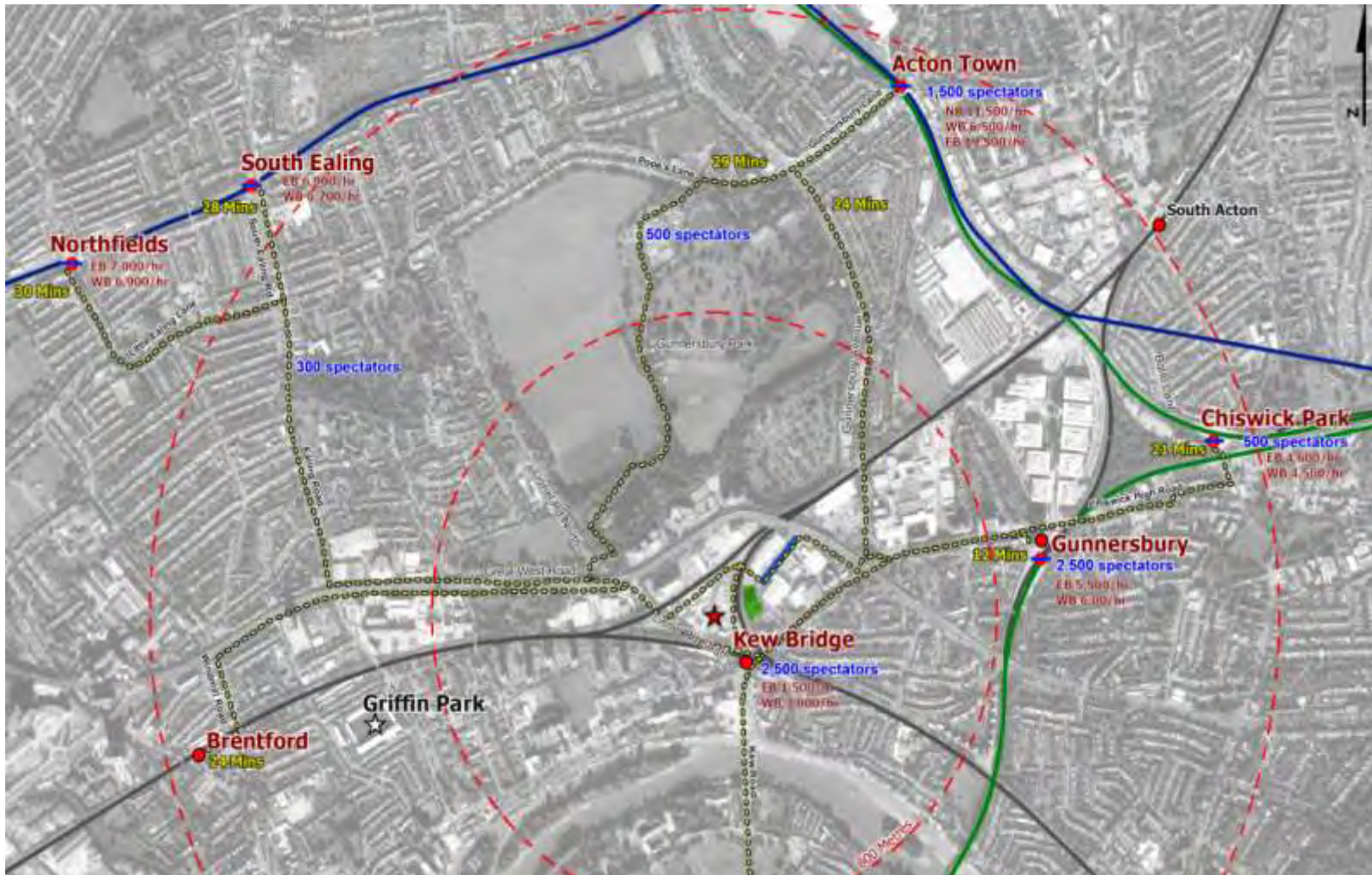
- Pedestrian Footway Improvements and Controlled Crossing
- Network Rail discussions advancing



- **Match Day - Stadium Management Plan**
 - Event Management Plan - BFC
 - Operations Plan - Police
 - Local Area Management Plan - BFC
 - Travel Plan - BFC
 - Monitoring Programme - BFC



- **Match Day – Local Area Management Plan**
 - All external management matters in relation to the stadium use
 - Pedestrian movement
 - Vehicle movement
 - Car parking
 - Anti social behaviour
 - CCTV & Lighting



Existing tunnel under Lionel Road South



**BRENTFORD
COMMUNITY STADIUM**
More than just a football club



Transport Study Update



**BRENTFORD
COMMUNITY STADIUM**
More than just a football club

